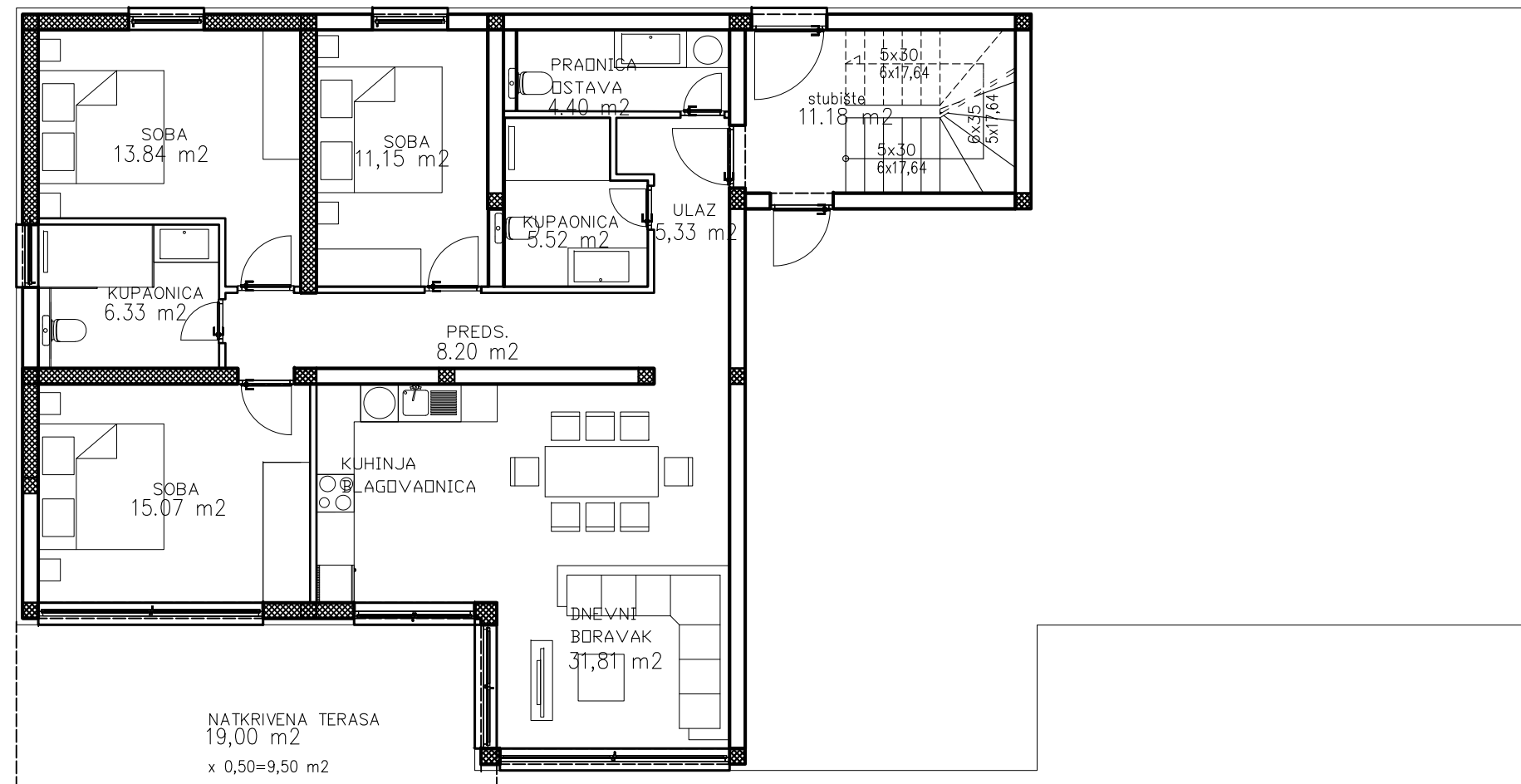
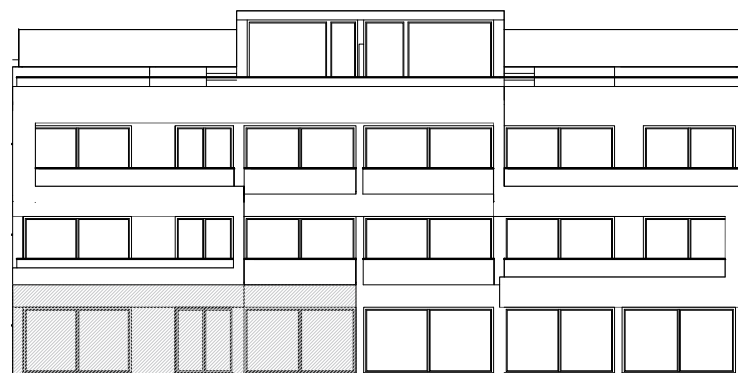


# TLOCRT PRIZEMLJA-STAN 1

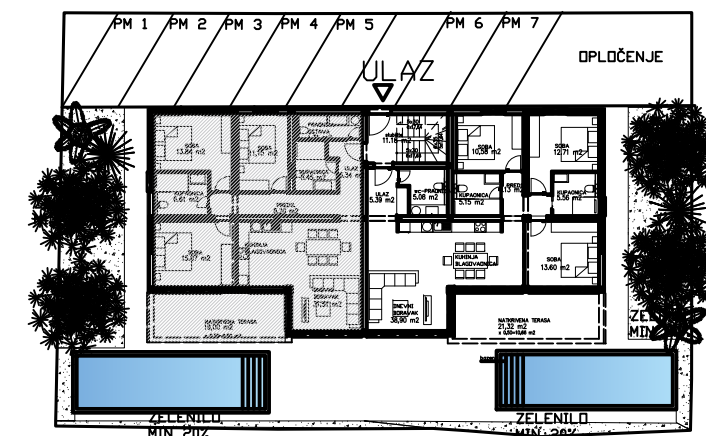


P(m<sup>2</sup>)

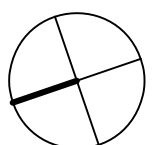
NKP(m<sup>2</sup>)



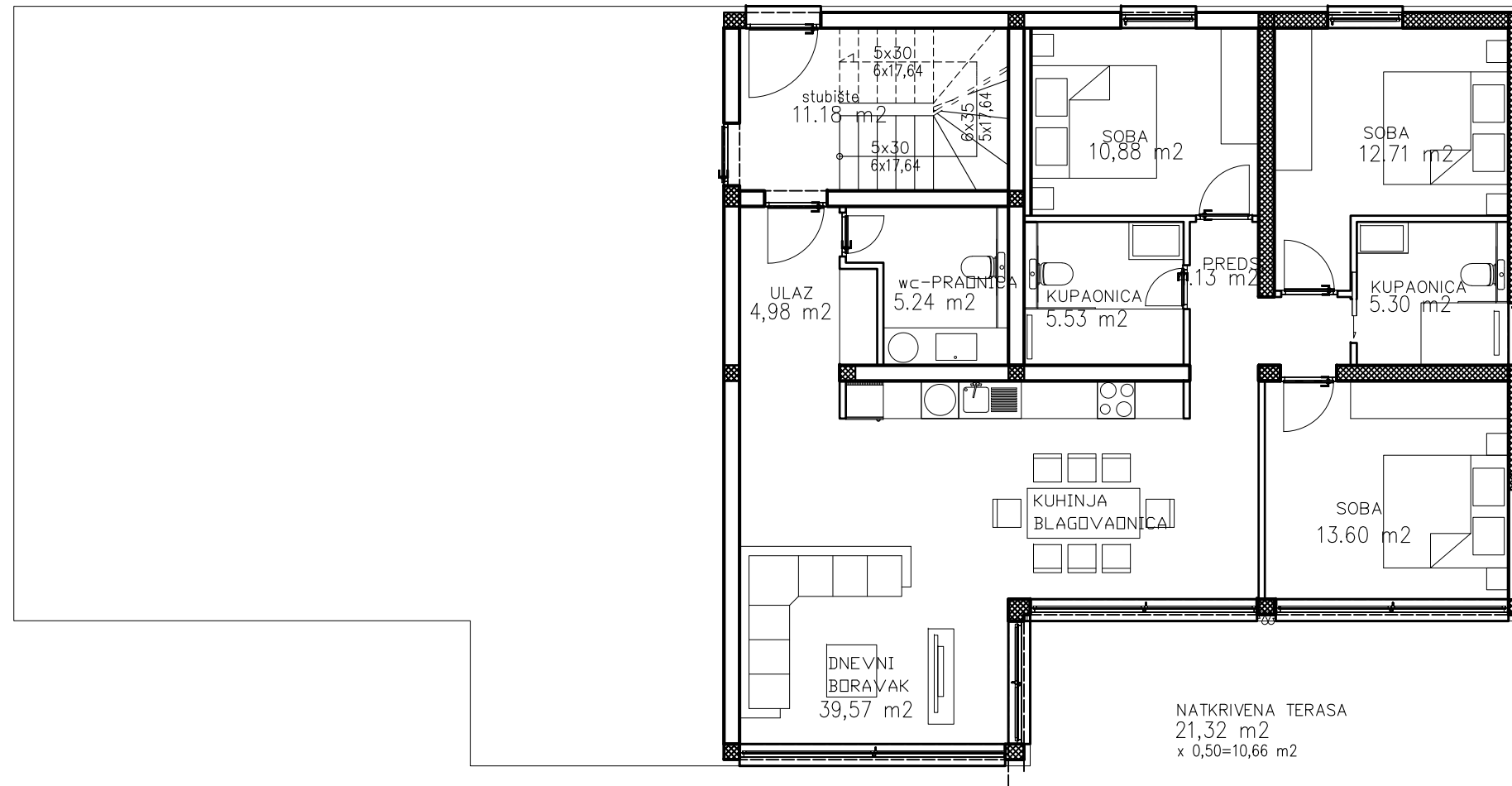
PRIZEMLJE STAN 1		
1	Ulaz	5,33 x 1,00 = 5,33
2	preds.	8,20 x 1,00 = 8,20
3	soba 1	11,15 x 1,00 = 11,15
4	soba 2	13,84 x 1,00 = 13,84
5	kupaonica	6,33 x 1,00 = 6,33
6	kupaonica	5,52 x 1,00 = 5,52
7	soba 3	15,07 x 1,00 = 15,07
8	dnevni boravak sa kuhinjom i blagov.	31,81 x 1,00 = 31,81
9	praonica-ostava	4,40 x 1,00 = 4,40
10	natkrivena terasa	19,00 x 0,50 = 9,50
11	vrt	98,54 x 0,10 = 9,85
12	bazen	33,37 x 0,25 = 8,34
13	parking	14,65 x 0,20 = 2,93
<b>prizemlje stan 1 ukupno</b>		<b>267,21      132,28</b>



SITUACIJA

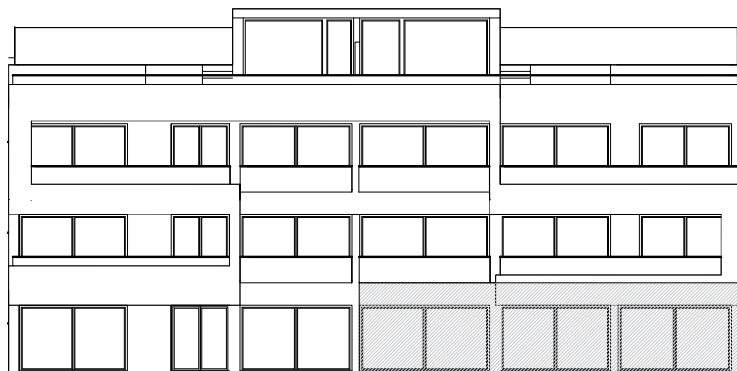


# TLOCRT PRIZEMLJA-STAN 2

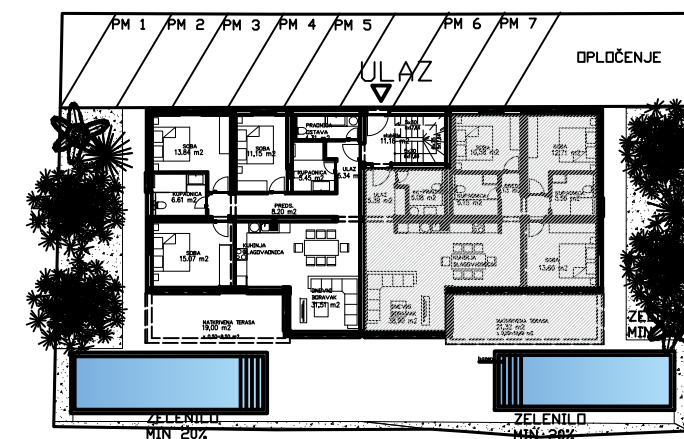


P(m<sup>2</sup>)

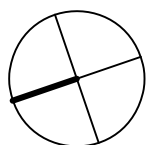
NKP(m<sup>2</sup>)



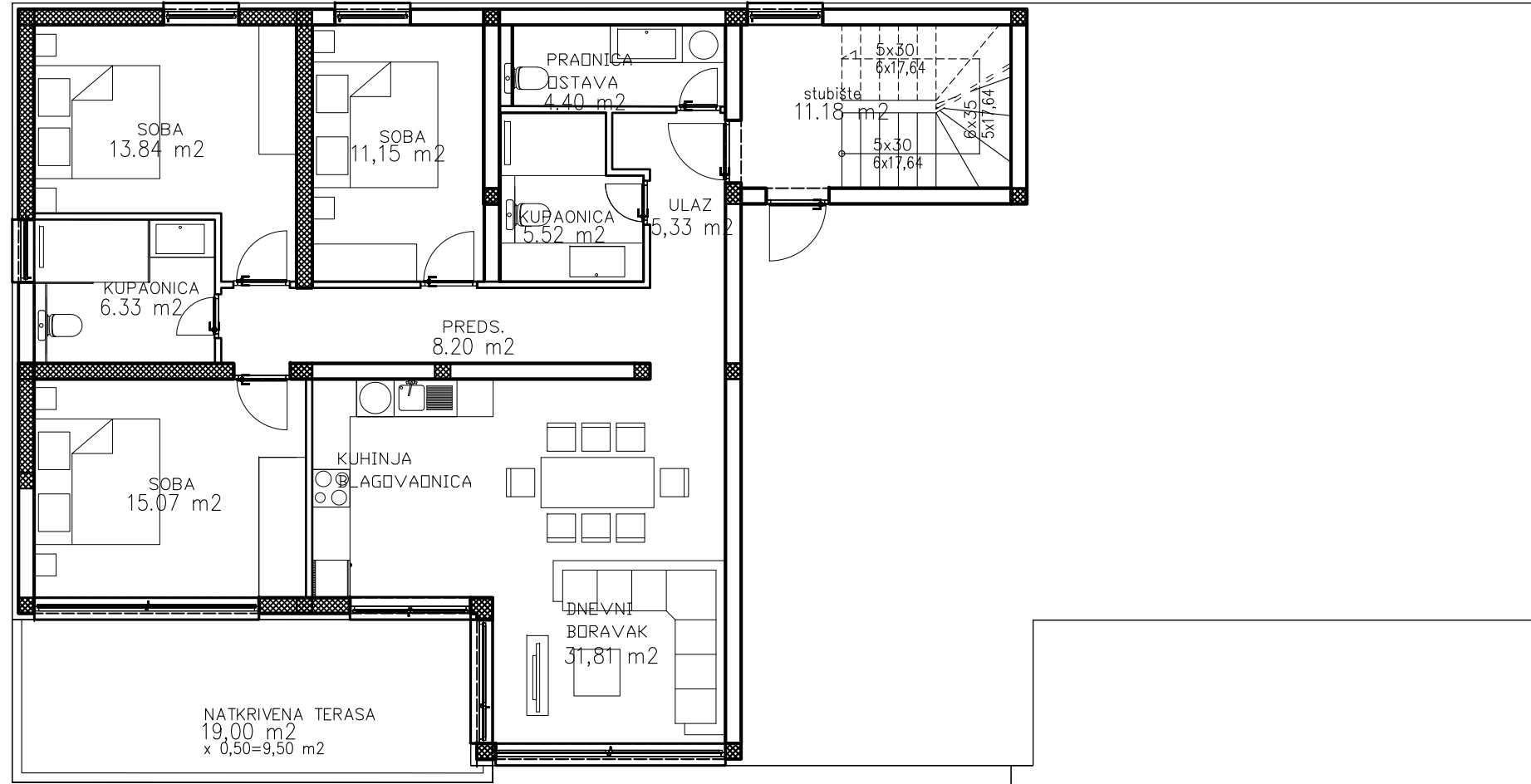
PRIZEMLJE STAN 2		
1	Ulaz	4,98 x 1,00 = 4,98
2	wc-praonica	5,24 x 1,00 = 5,24
3	soba 1	10,88 x 1,00 = 10,88
4	soba 2	12,71 x 1,00 = 12,71
5	kupaonica	5,30 x 1,00 = 5,30
8	dnevni boravak sa kuhinjom i blagov.	39,57 x 1,00 = 39,57
9	kupaonica	5,53 x 1,00 = 5,53
10	soba	13,60 x 1,00 = 13,60
11	predsoblje	4,13 x 1,00 = 4,13
12	natkrivena terasa	21,32 x 0,50 = 10,66
13	vrt	109,26 x 0,10 = 10,93
14	bazen	29,65 x 0,25 = 7,41
15	parking	14,65 x 0,20 = 2,93
<b>prizemlje stan 2 ukupno</b>		<b>276,82      133,87</b>



SITUACIJA



# TLOCRT 1 KATA-STAN 3



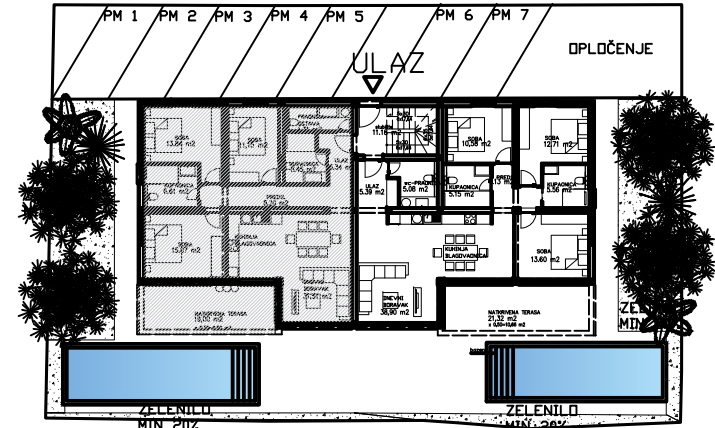
1 kat

P(m<sup>2</sup>)

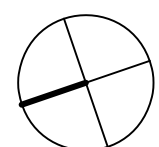
NKP(m<sup>2</sup>)



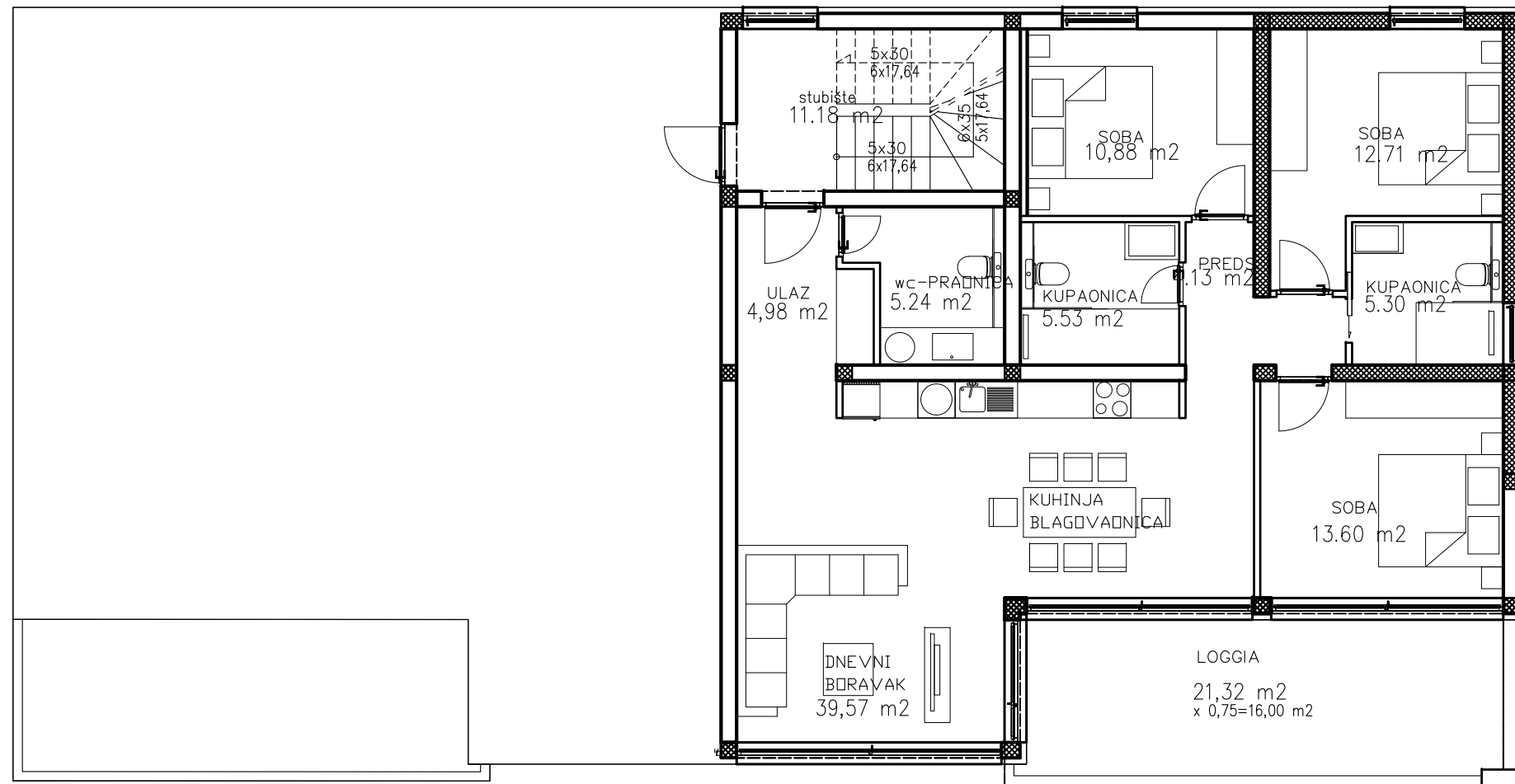
1 kat STAN 3		
1	Ulaz	5,33 x 1,00 = 5,33
2	preds.	8,20 x 1,00 = 8,20
3	soba 1	11,15 x 1,00 = 11,15
4	soba 2	13,84 x 1,00 = 13,84
5	kupaonica	6,33 x 1,00 = 6,33
6	kupaonica	5,52 x 1,00 = 5,52
7	soba 3	15,07 x 1,00 = 15,07
8	dnevni boravak sa kuhinjom i blagov.	31,81 x 1,00 = 31,81
9	praonica-ostava	4,40 x 1,00 = 4,40
10	natkrivena terasa	19,00 x 0,50 = 9,50
11	parking	14,65 x 0,20 = 2,93
<b>1 KAT stan 3 ukupno</b>		<b>135,30      114,08</b>



SITUACIJA



# TLOCRT 1 KATA-STAN 4

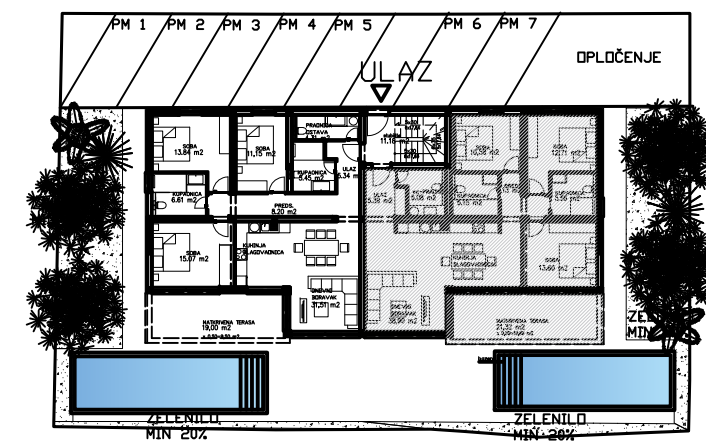


P(m<sup>2</sup>)

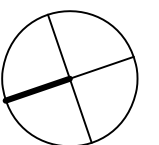
NKP(m<sup>2</sup>)



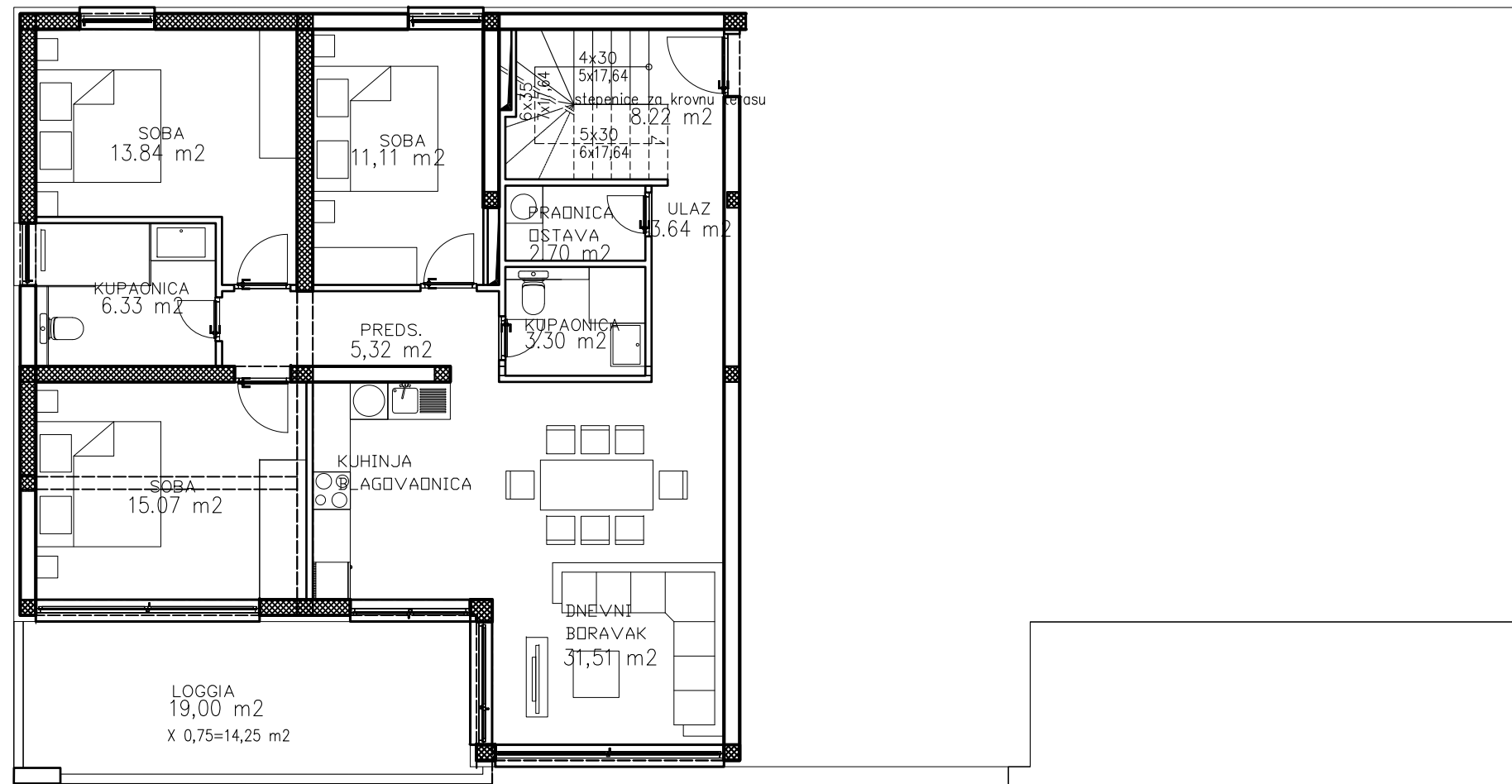
1 KAT STAN 4		
1	Ulaz	4,98 x 1,00 = 4,98
2	wc-praonica	5,24 x 1,00 = 5,24
3	soba 1	10,88 x 1,00 = 10,88
4	soba 2	12,71 x 1,00 = 12,71
5	kupaonica	5,30 x 1,00 = 5,30
8	dnevni boravak sa kuhinjom i blagov	39,57 x 1,00 = 39,57
9	kupaonica	5,53 x 1,00 = 5,53
10	soba	13,60 x 1,00 = 13,60
11	predsoblje	4,13 x 1,00 = 4,13
12	loggia	21,32 x 0,75 = 15,99
13	parking	14,65 x 0,20 = 2,93
<b>1 KAT stan 4 ukupno</b>		<b>137,91      120,86</b>



SITUACIJA

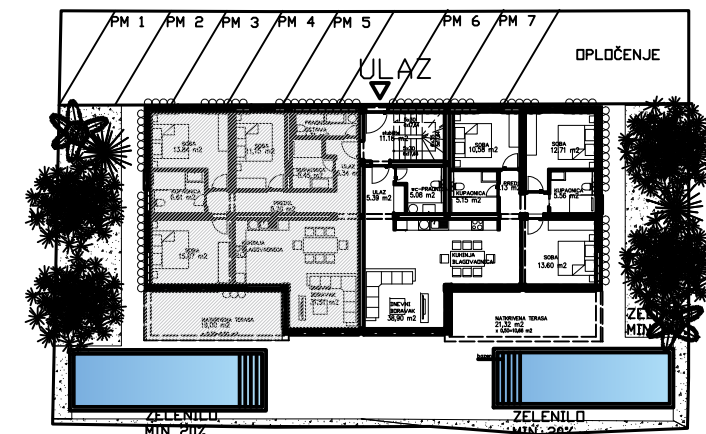


# TLOCRT 2 KATA-STAN 5

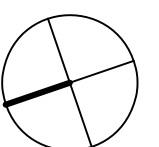


2 kat STAN 5		
1	Ulaz	3,64 x 1,00 = 3,64
2	kupaonica	3,30 x 1,00 = 3,30
3	praonica	2,70 x 1,00 = 2,70
4	soba 1	11,11 x 1,00 = 11,11
5	soba 2	13,84 x 1,00 = 13,84
8	kupaonica	6,33 x 1,00 = 6,33
9	soba 3	15,07 x 1,00 = 15,07
10	predsoblje	5,32 x 1,00 = 5,32
11	dnevni boravak sa kuhinjom i blagov	31,51 x 1,00 = 31,51
12	stepenice za na krov	8,22 x 1,00 = 8,22
13	loggia	19,00 x 0,75 = 14,25
14	parking	14,65 x 0,20 = 2,93
<b>2 kat stan 5 ukupno</b>		<b>134,69      118,22</b>
KROVNA terasa 5		
krovnna terasa stan 5		
1	krovnna terasa nenatkrivena	84,09 x 0,25 = 21,02
2	krovnna terasa natkrivena	4,02 x 0,50 = 2,01
2	bazen nenatkriveni	21,75 x 0,25 = 5,44
2	strojarnica bazena	5,95 x 0,50 = 2,98
2	kupalište iznad strojarnice	7,13 x 0,25 = 1,78
<b>KROVNA TERASA stan 5 ukupno</b>		<b>122,94      33,23</b>

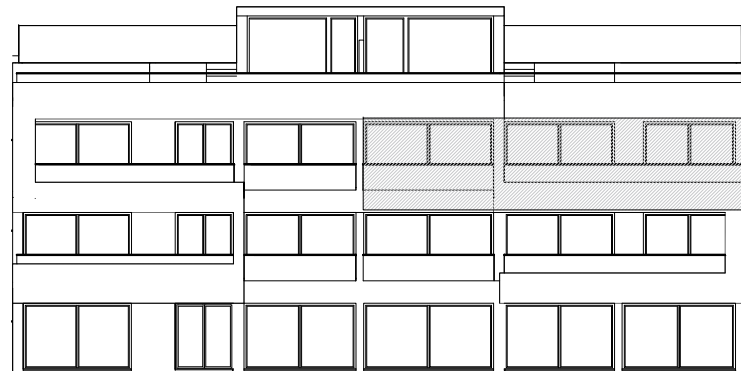
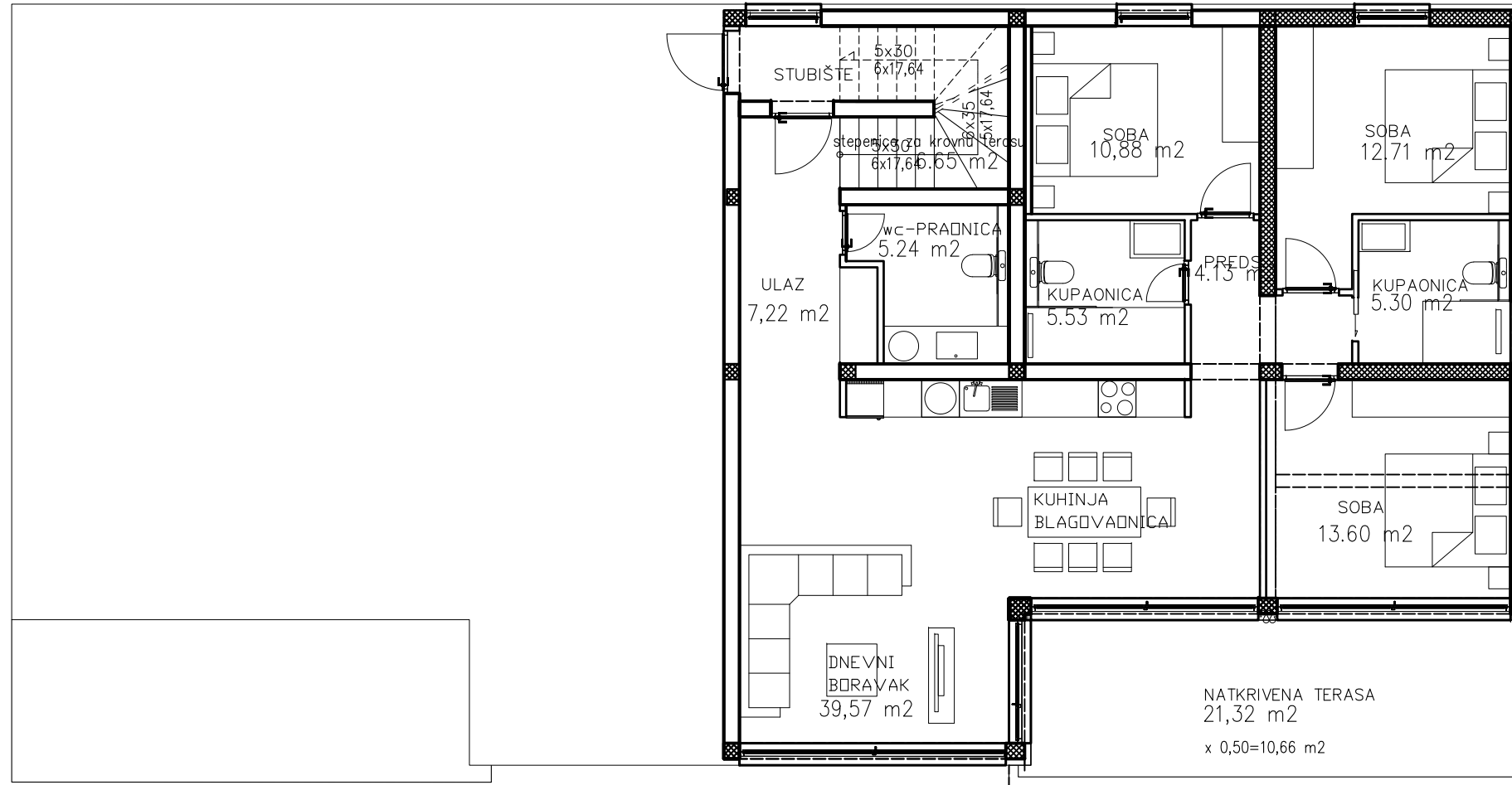
	P(m²)	NKP(m²)
<b>stan 5 ukupno</b>	<b>257,63</b>	<b>151,45</b>



SITUACIJA

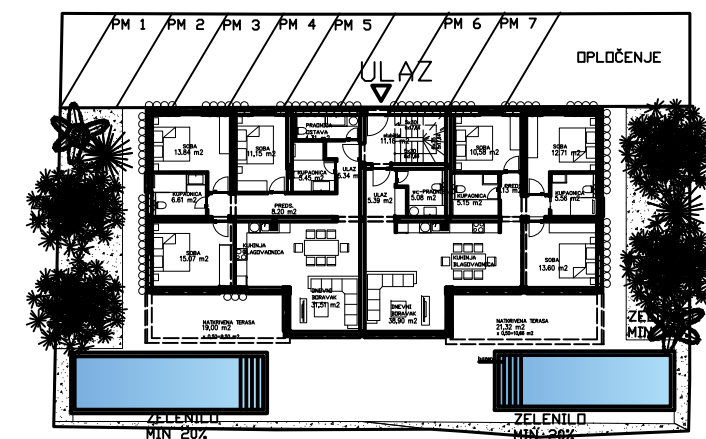


# TLOCRT 2 KATA-STAN 6

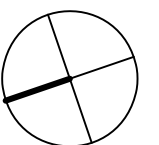


2 kat STAN 6		
1	Ulaz	7,22 x 1,00 = 7,22
2	dnevni boravak sa kuhinjom i blagov	39,57 x 1,00 = 39,57
3	predsoblje	4,13 x 1,00 = 4,13
4	wc-praonica	5,24 x 1,00 = 5,24
5	soba 1	10,88 x 1,00 = 10,88
6	soba 2	12,71 x 1,00 = 12,71
7	soba 3	13,60 x 1,00 = 13,60
8	kupaonica	5,30 x 1,00 = 5,30
9	kupaonica	5,53 x 1,00 = 5,53
10	stepenice za na krov	6,65 x 1,00 = 6,65
11	natkrivena terasa	21,32 x 0,50 = 10,66
12	parking	14,65 x 0,20 = 2,93
<b>2 kat stan 6 ukupno</b>		<b>146,80      124,42</b>
KROVNA TERASA STAN 6		
1	krovnna terasa nenatkrivena	75,07 x 0,25 = 18,77
2	krovnna terasa natkrivena	4,60 x 0,50 = 2,30
2	bazen nenatkriveni	19,18 x 0,25 = 4,80
2	strojarnica bazena	8,92 x 0,50 = 4,46
2	kupalište iznad strojarnice	10,52 x 0,25 = 2,63
<b>2 Krovna terasa stan 6 ukupno</b>		<b>118,29      32,95</b>

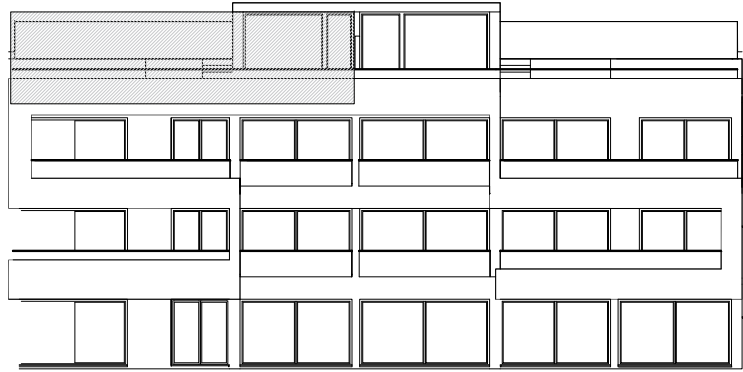
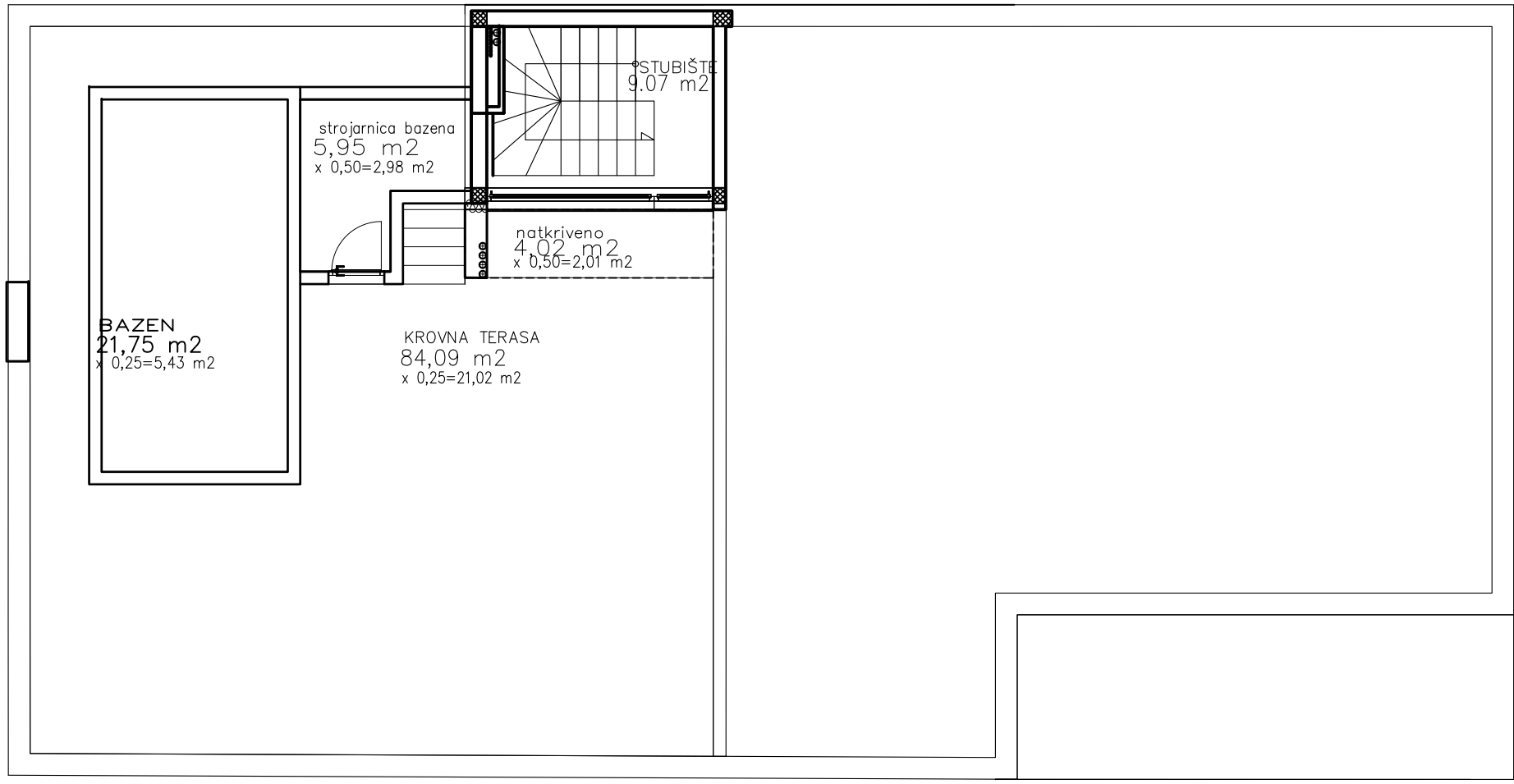
stan 6 ukupno	P(m <sup>2</sup> )	NKP(m <sup>2</sup> )
	265,09	157,37



SITUACIJA

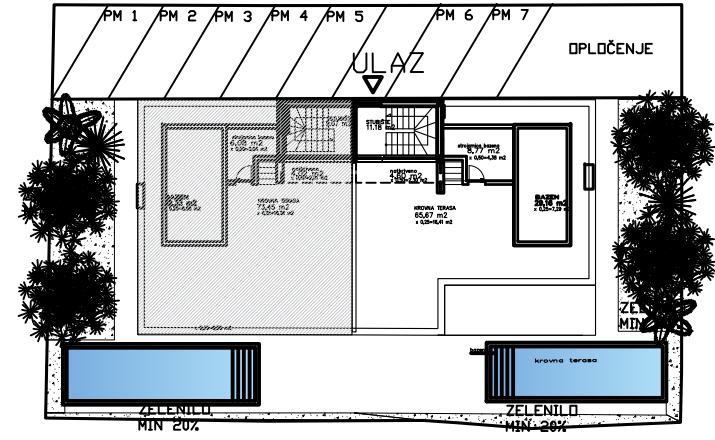


# TLOCRT KROVNE TERASE-STAN 5

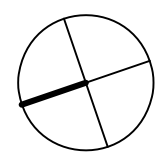


KROVNA terasa stan 5		krovna terasa stan 5	
1	krovna terasa nenatkrivena	84,09 x 0,25	= 21,02
2	krovna terasa natkrivena	4,02 x 0,50	= 2,01
2	bazen nenatkriveni	21,75 x 0,25	= 5,44
2	strojarnica bazena	5,95 x 0,50	= 2,98
2	kupalište iznad strojarnice	7,13 x 0,25	= 1,78
<b>KROVNA TERASA stan 5 ukupno</b>		<b>122,94</b>	<b>33,23</b>

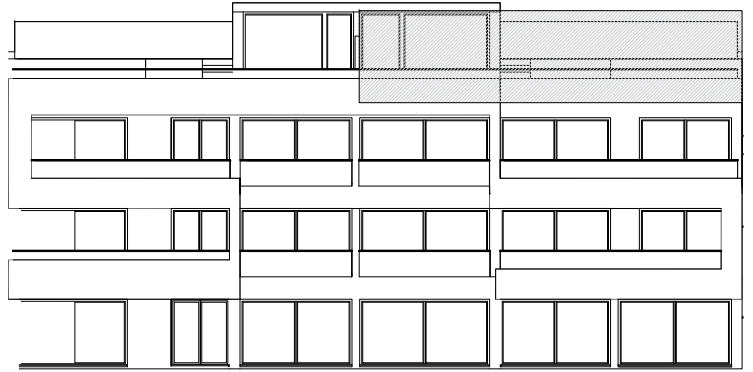
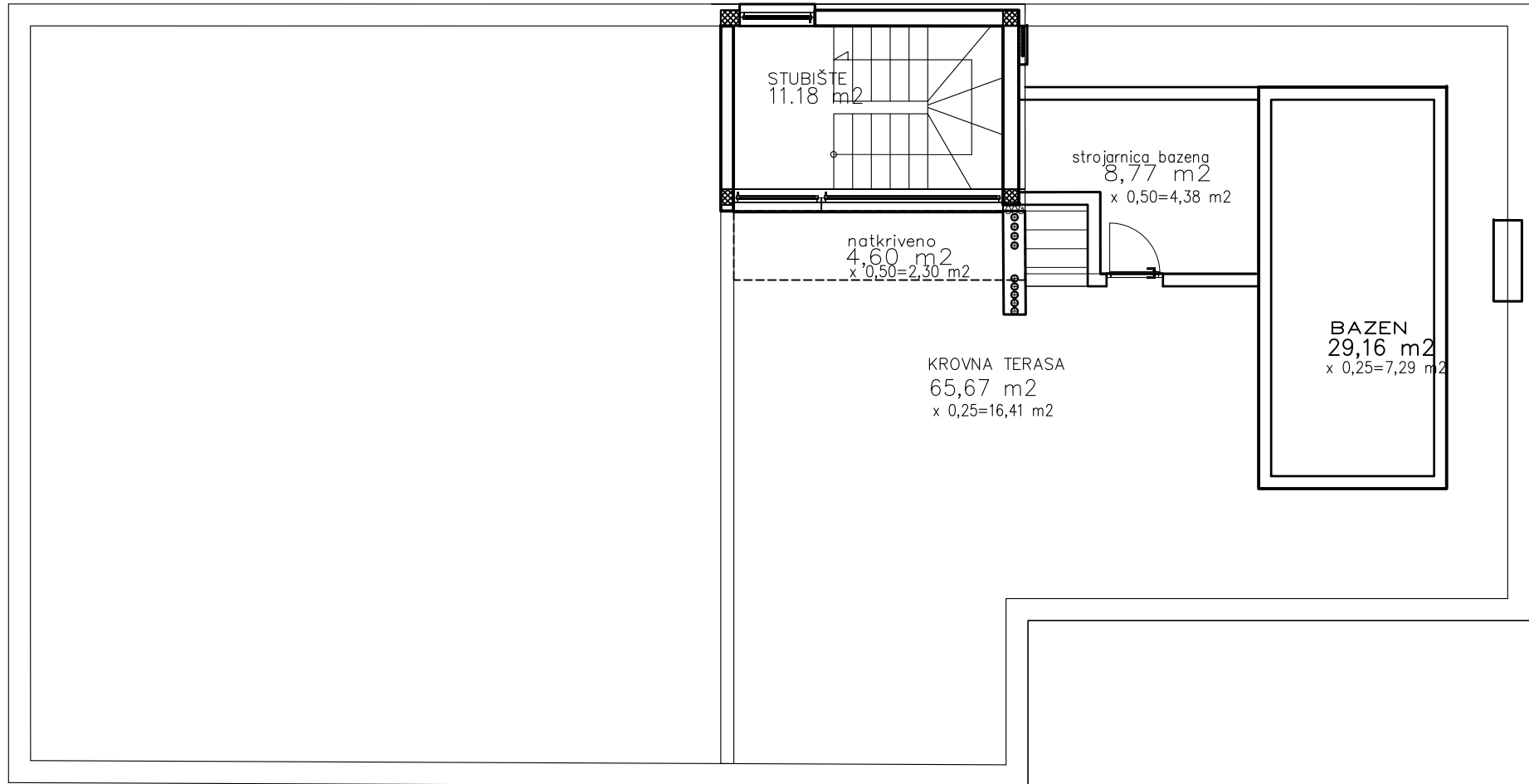
stan 5 ukupno		P(m <sup>2</sup> )	NKP(m <sup>2</sup> )
		257,63	151,45



SITUACIJA

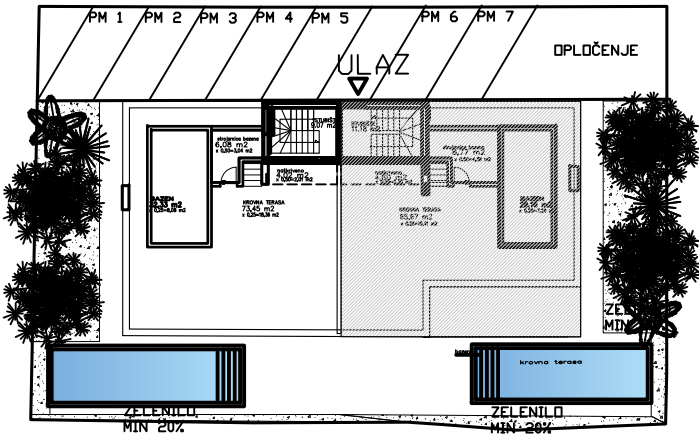


# TLOCRT KROVNE TERASE-STAN 6



KROVNA TERASA STAN 6			
1	krovna terasa nenatkrivena	75,07 x 0,25	= 18,77
2	krovna terasa natkrivena	4,60 x 0,50	= 2,30
2	bazen nenatkriveni	19,18 x 0,25	= 4,80
2	strojarnica bazena	8,92 x 0,50	= 4,46
2	kupalište iznad strojarnice	10,52 x 0,25	= 2,63
<b>2 Krovna terasa stan 6 ukupno</b>		<b>118,29</b>	<b>32,95</b>

stan 6 ukupno		P(m <sup>2</sup> )	NKP(m <sup>2</sup> )
		265,09	157,37



SITUACIJA

